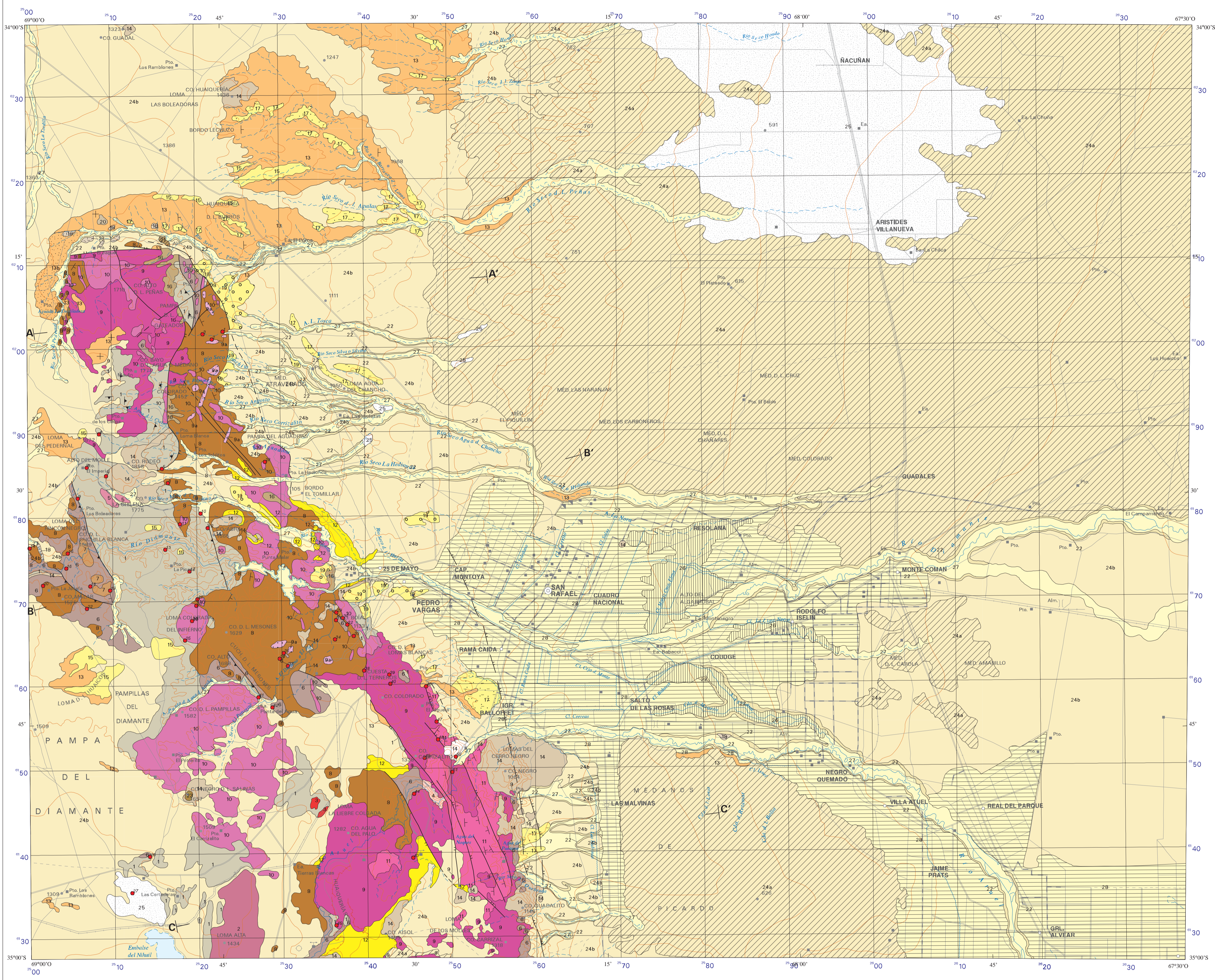
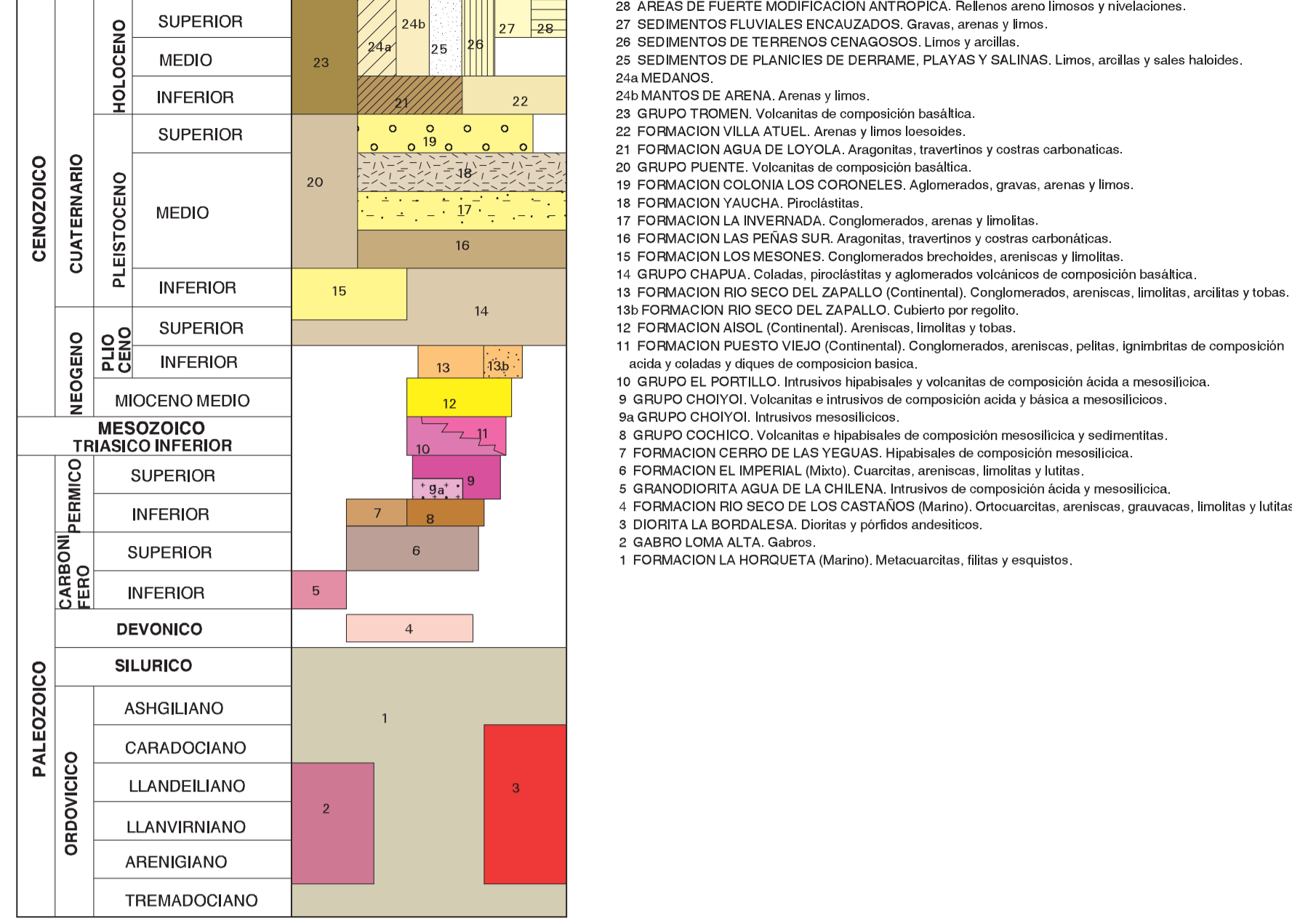
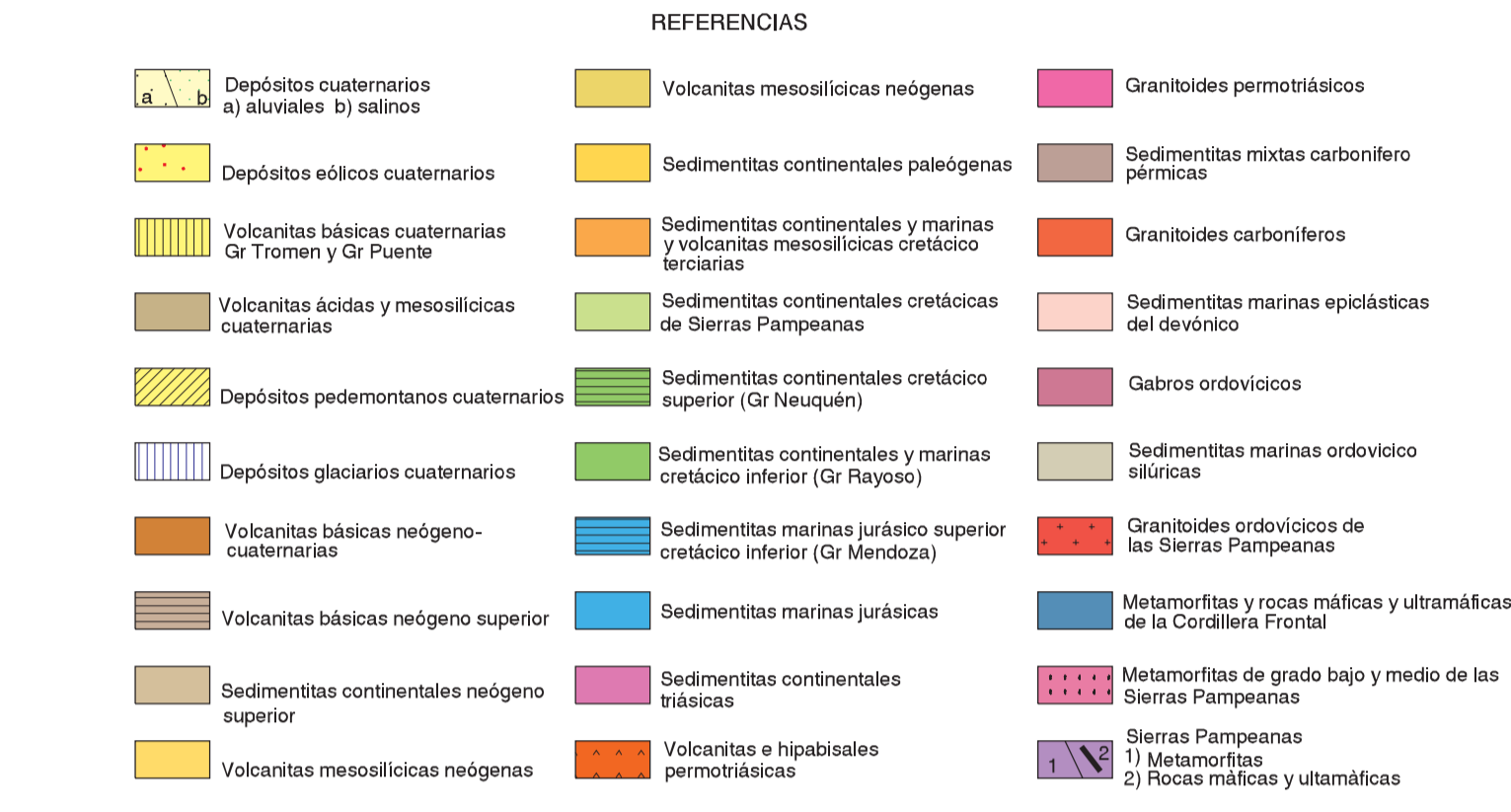
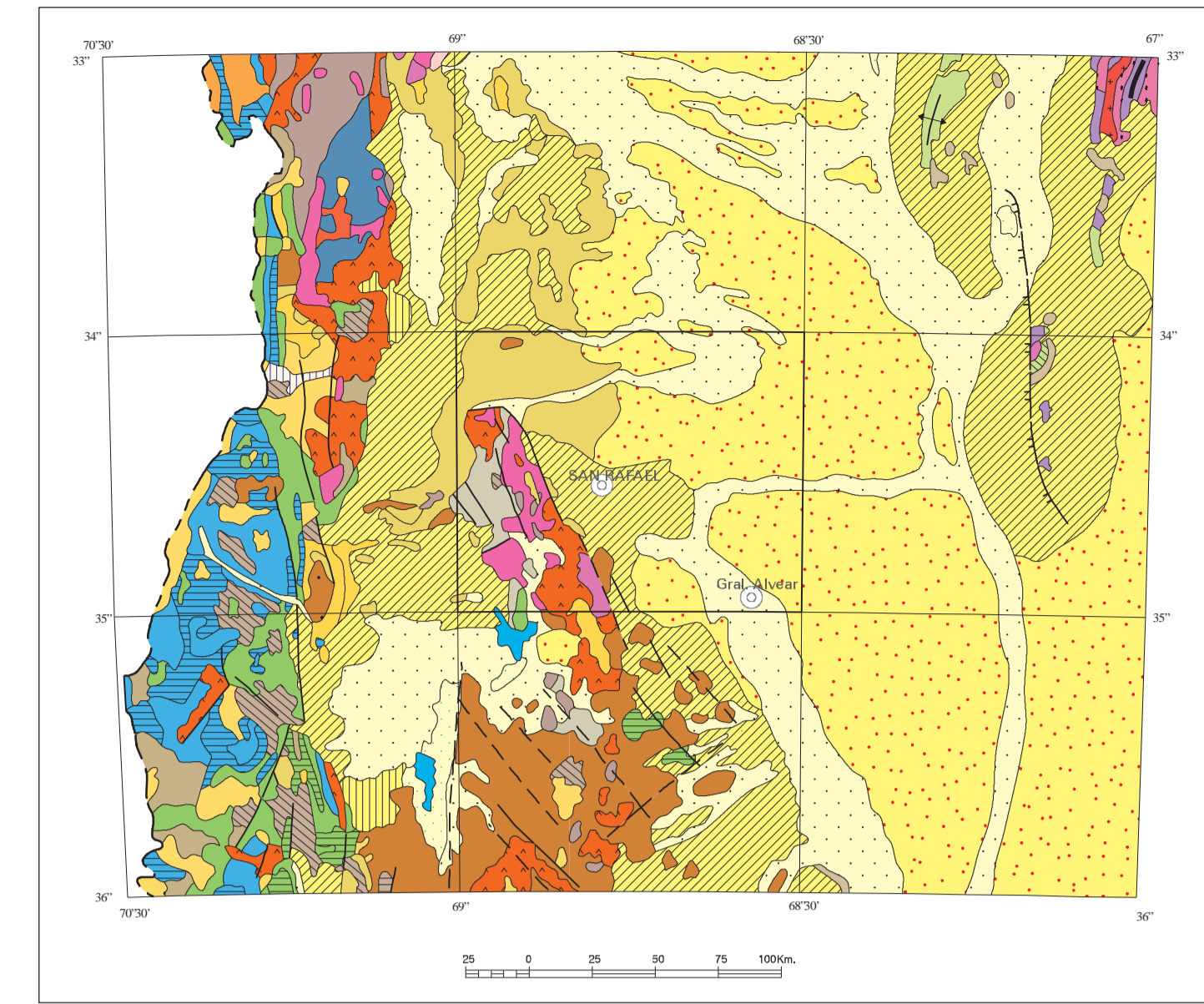


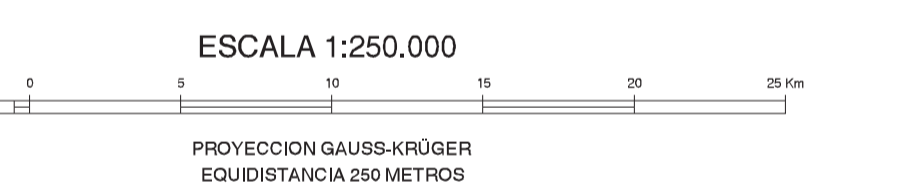
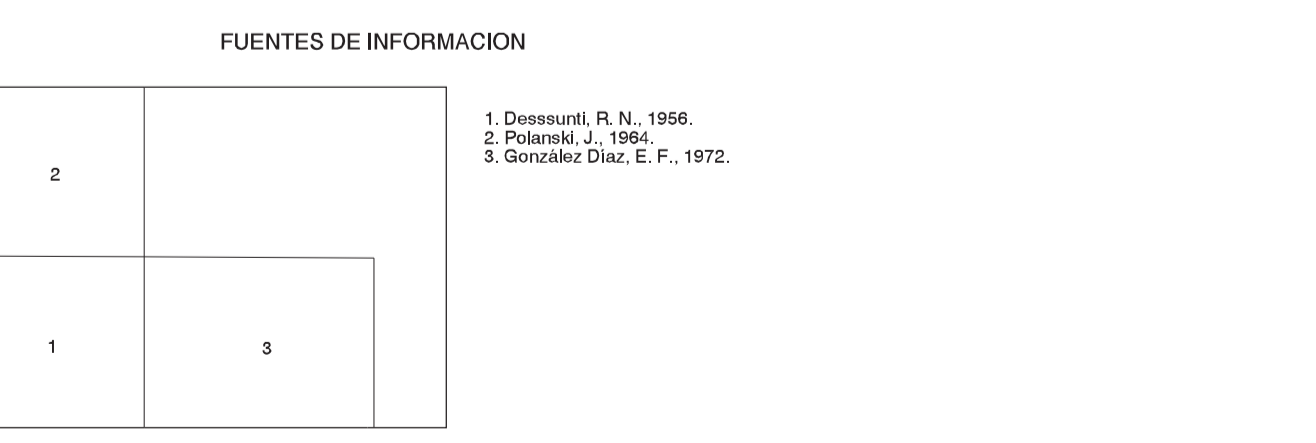
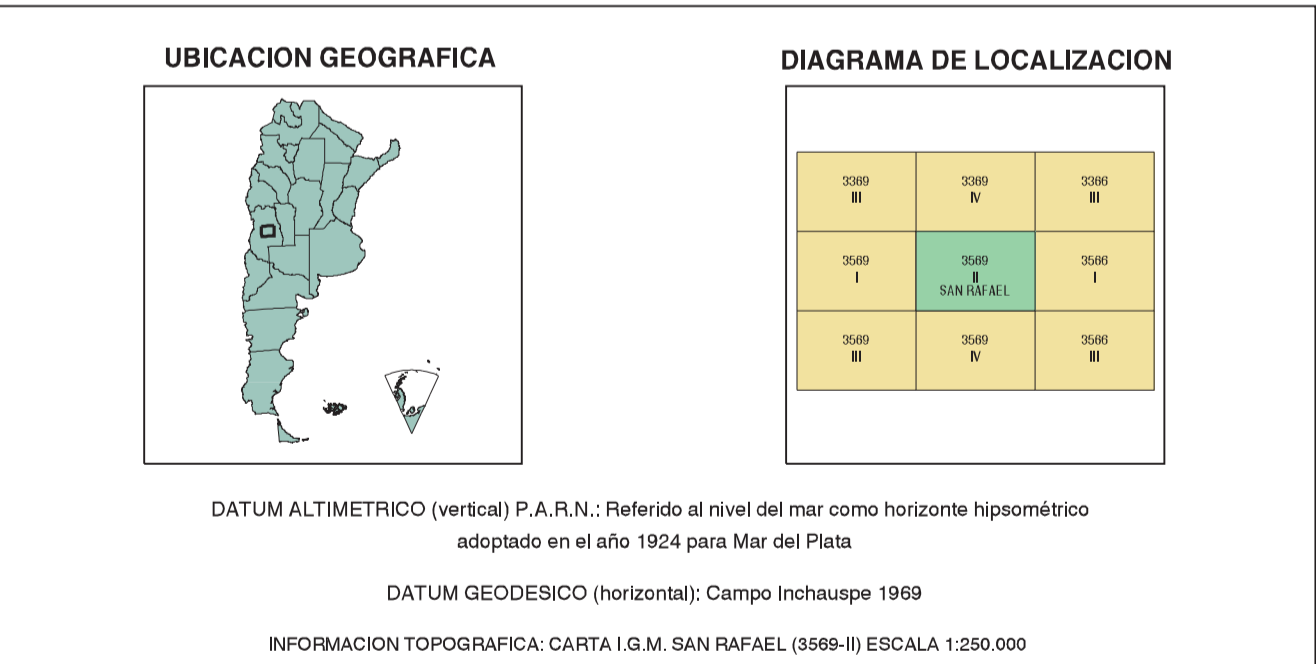
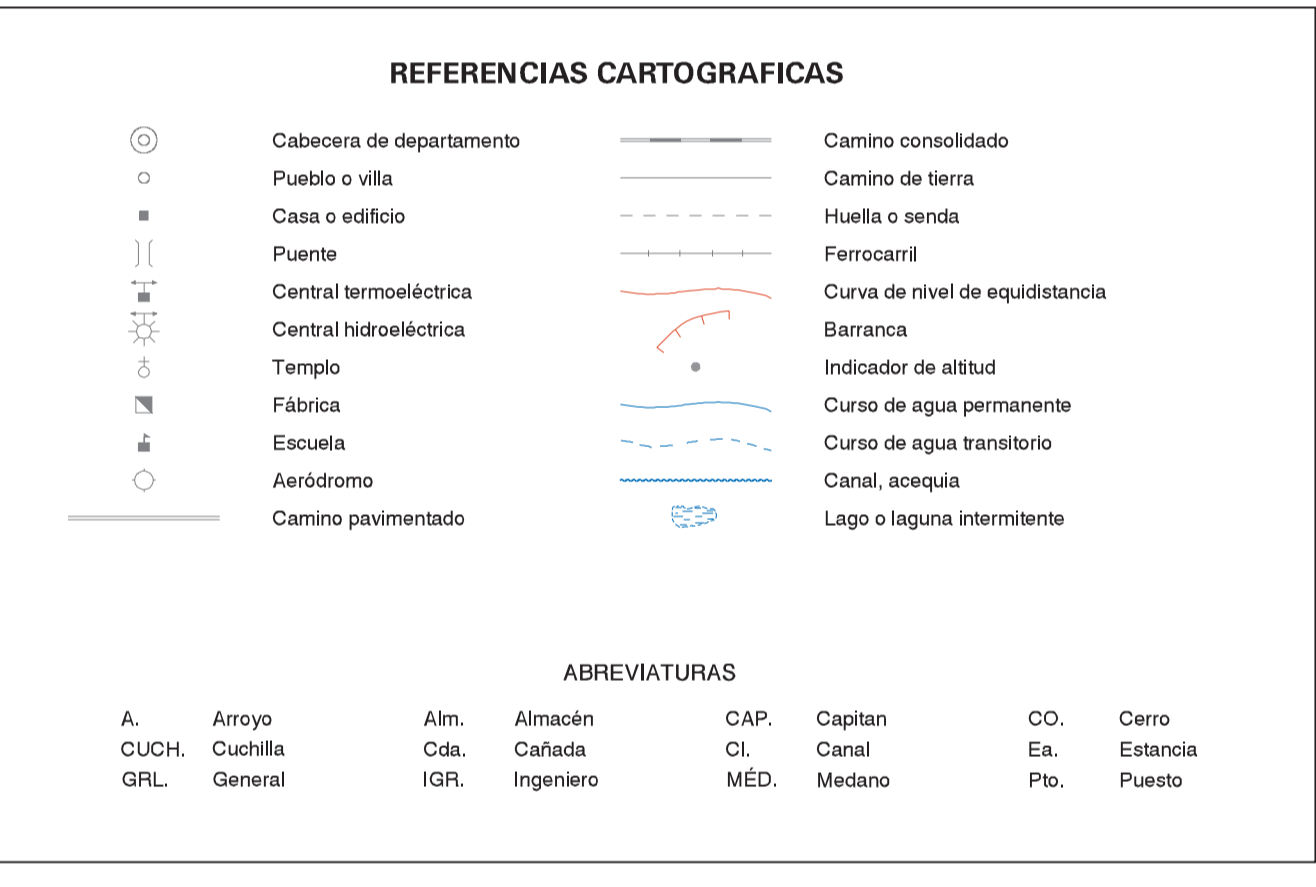
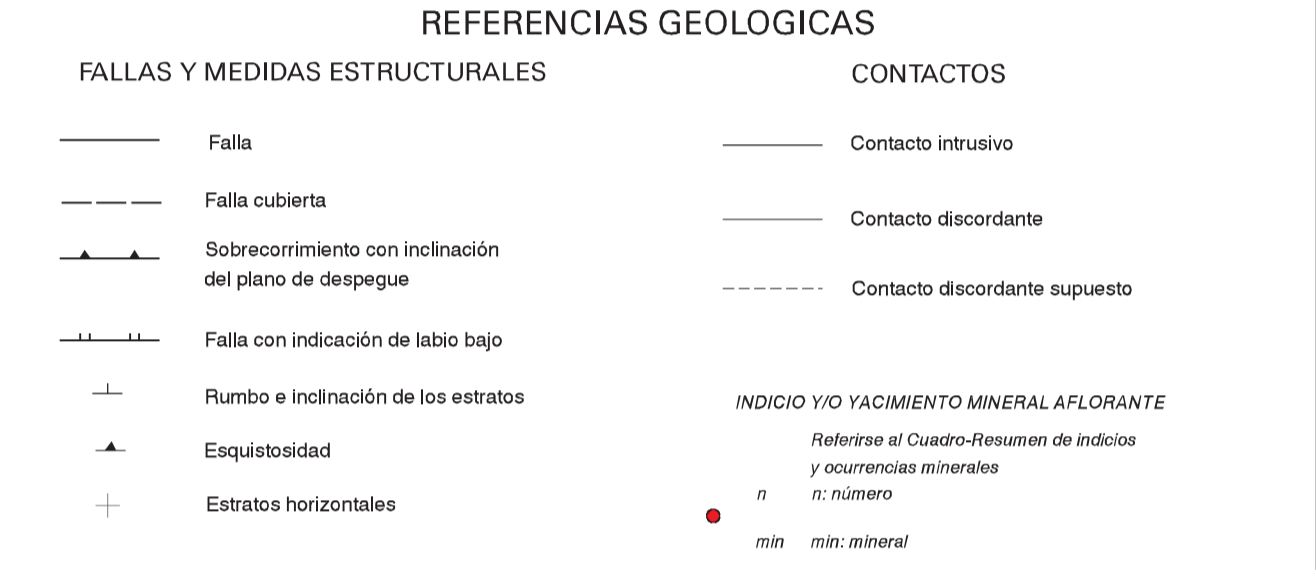
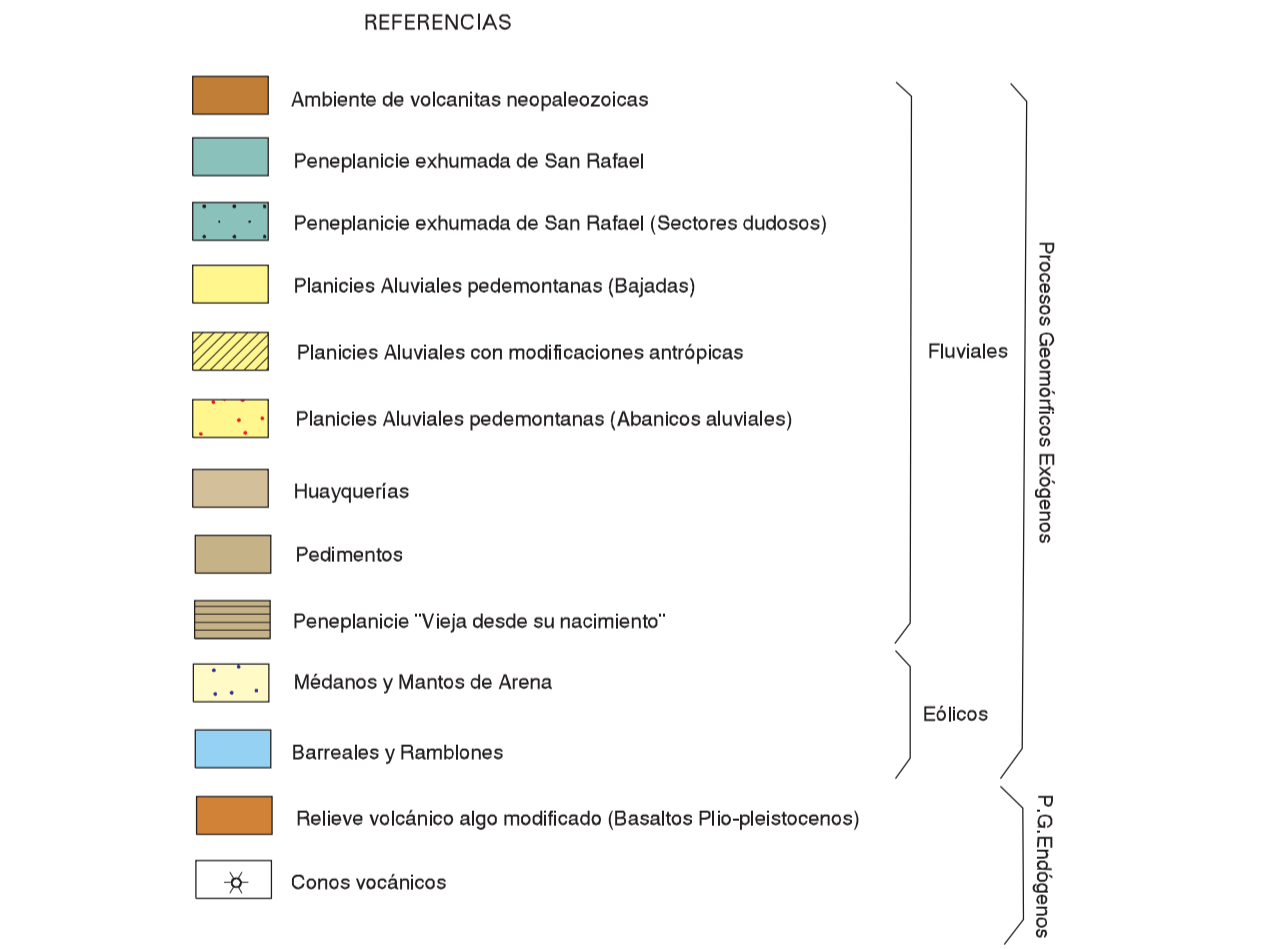
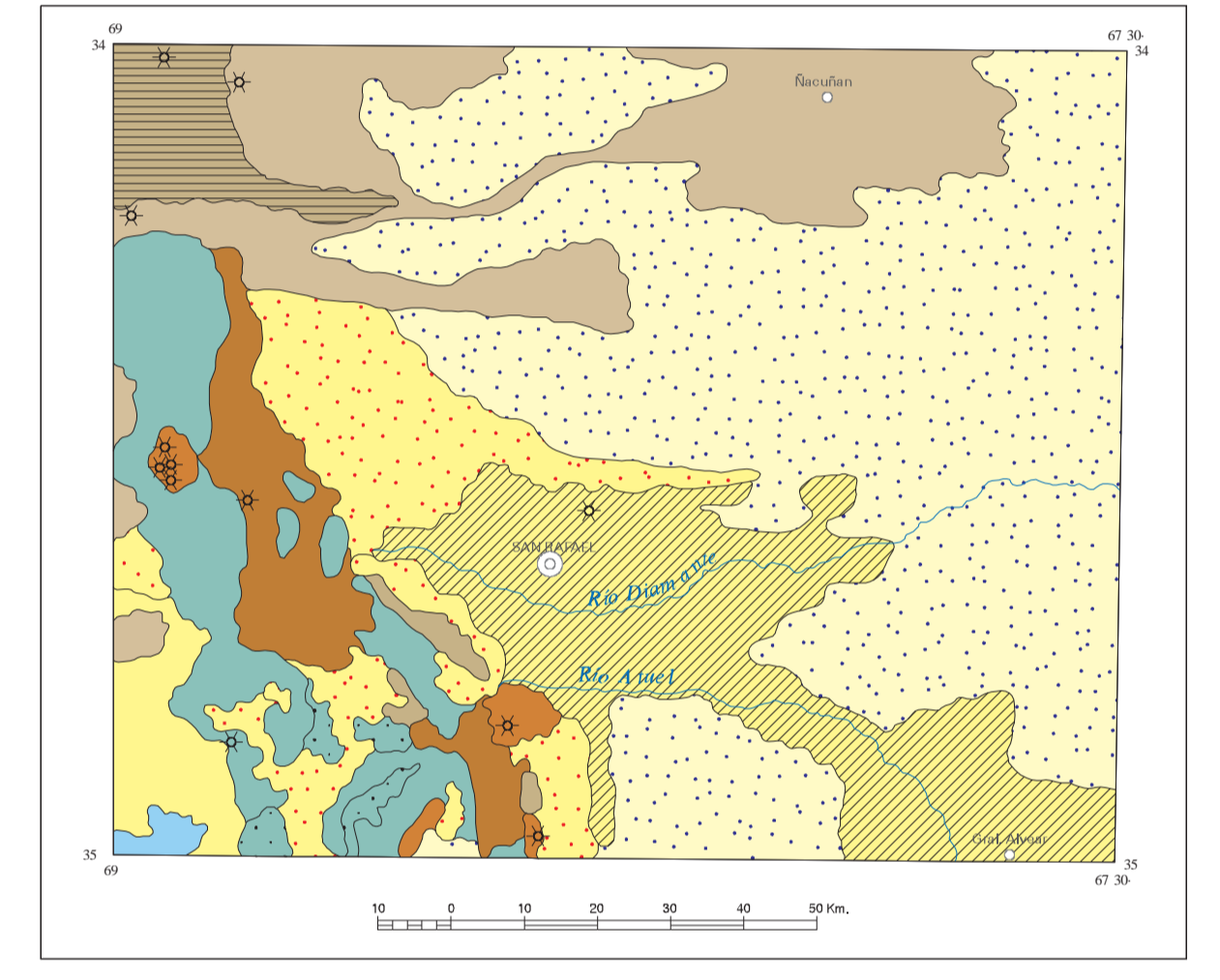
CUADRO ESTRATIGRAFICO



ESQUEMA REGIONAL

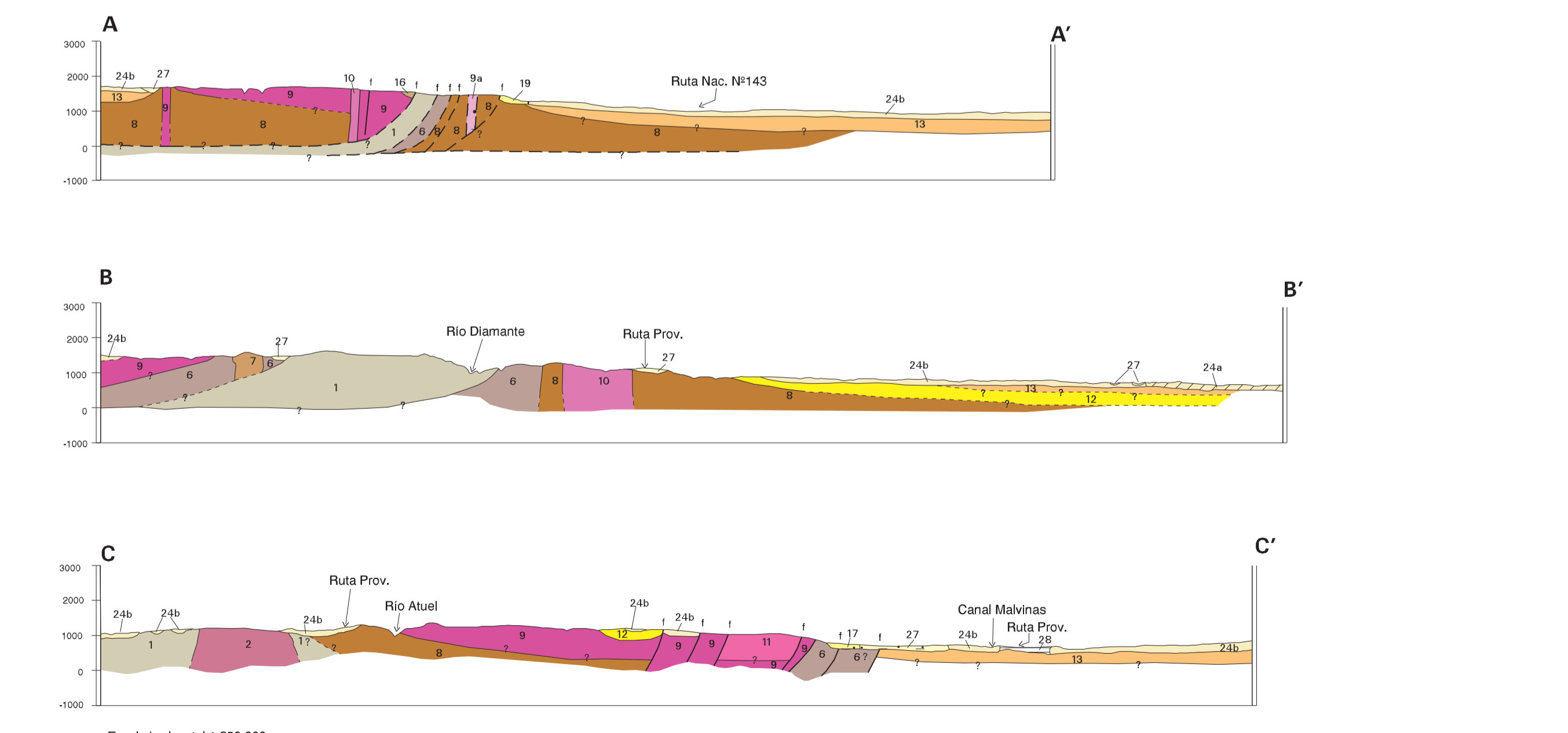


ESQUEMA GEOMORFOLOGICO



NORMAS, DIRECCION Y SUPERVISION DEL IGRM
JEFE DE PROYECTO: Eliseo G. Sepúlveda
GEOLOGA: Francisco W. Carpio, María G. Ragazzi,
Juan C. M. Zanetti, Marcelo A. Zarate,
RECURSOS MINERALES: Francisco W. Carpio.

PERFILES TRANSVERSALES



PERFILES COLUMNARES

